

## FBE 112 Simplex filter Mod.



EMI filters simplex Type Canasta offers simplicity in design and versatility, for use in intermittent operations in industrial processes.

Canasta line type EMI, offers a wide range of sizes, construction materials such connections and types of baskets that make it versatile and highly efficient.

Canasta Simplex type filters can be designed in compliance with ASME Code Section VIII Div. 1, NACE, and NBRF ASTM ANSI-28-PEMEX.

**Fabrication material:** Carbon Steel, Stainless Steel.

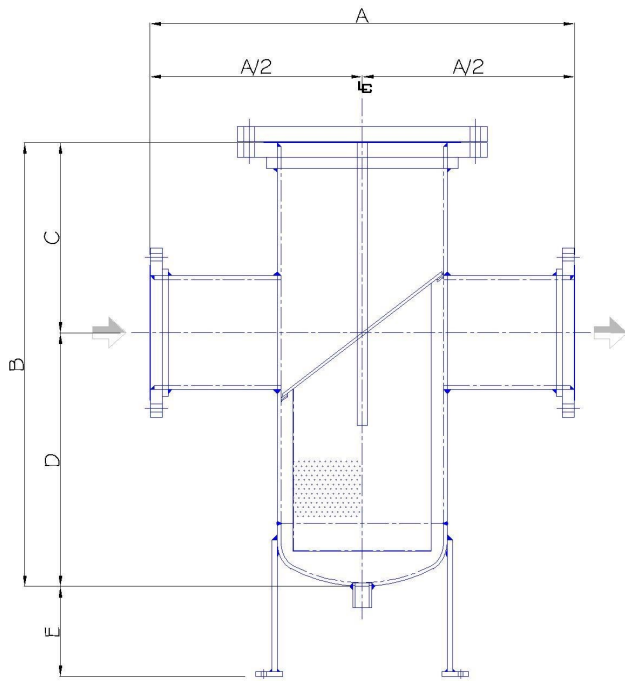
**Input and Output:** 2 "to 24" Ø in diameter or greater with body 4 "to 36" Ø

### Mod. 112 FBE

- They are manufactured with flat or semi-elliptical bottom, with or without davit depending on customer needs.
- Perforated metal basket 5/32 "STD. EMI other measures to specify.
- Wire mesh basket 20, 40 and 60 mesh is the STD. EMI other measures to specify.
- For high pressures and special designs please contact our technical department.



## FBE 112 Simplex filter Mod.

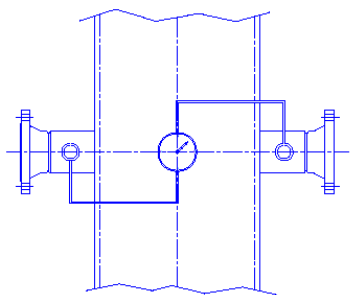


Mod. 112 FBE 150 #

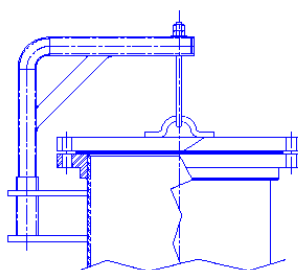


Mod. 112 FBE 600 #

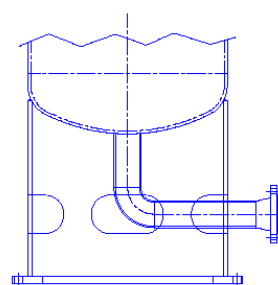
# FBE 112 Simplex filter Mod.



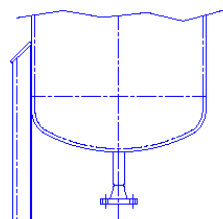
CONEXIONES PARA  
PRESION DIFERENCIAL



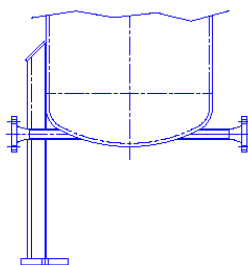
PESCANTE



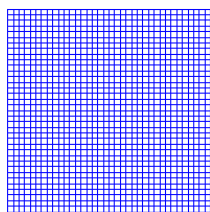
FANDON



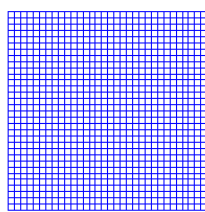
PIERNAS



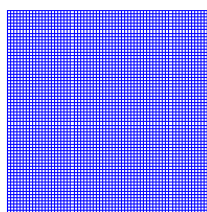
DREN HORIZONTAL



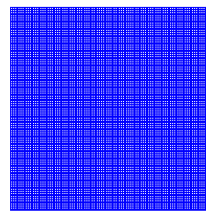
ABERTURA 1/32"  
MALLA 20  
(49% AREA ABIERTA)



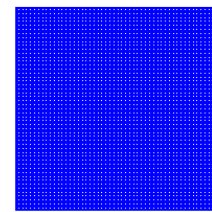
ABERTURA 1/50"  
MALLA 30  
(49% AREA ABIERTA)



ABERTURA 1/64"  
MALLA 40  
(30% AREA ABIERTA)



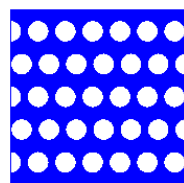
ABERTURA 0.009"  
MALLA 60  
(30.5% AREA ABIERTA)



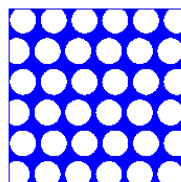
ABERTURA 0.007"  
MALLA 80  
(31.4% AREA ABIERTA)



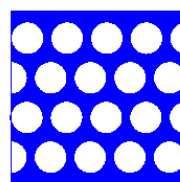
ABERTURA 0.005"  
MALLA 100  
(30.3% AREA ABIERTA)



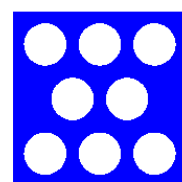
$\varnothing = 1/8"$   
32 PERF./IN.  
(40% AREA ABIERTA)



$\varnothing = 5/32"$   
33 PERF./IN.  
(62% AREA ABIERTA)



$\varnothing = 3/16"$   
18 PERF./IN.  
(50% AREA ABIERTA)



$\varnothing = 1/4"$   
8 PERF./IN.  
(40% AREA ABIERTA)

## FBE 112 Simplex filter Mod.

### WARRANTY



We are pleased that we are a 100% Mexican company manufacturer of its own brand,  
**"EMI"** We manufacture and put at your disposal the following equipment:

- Quick connections or adaptations (For loading)
- Canasta filters (simplex and duplex)
- Filters "Y"
- Filters "T"
- Flow indicators (peepholes)
- Security equipment (Showers and Eyewash)
- Blade valves (Type Dump, Intern, and Puerto in "V")

**EMI** warrants its products against defects in workmanship, quality of materials or workmanship for 18 months from date of shipment from our warehouse or a year in operation.

This warranty is to repair the defective product in service conditions recommended by the manufacturer. The warranty is not valid when the article has been disassembled and / or repaired by unauthorized personnel.

In no event shall the manufacturer responsible for declining profits, losses plant unemployment, increased operating costs or other consequential damages item usage.

The illustrations in this catalog are representations of a model of each product line, but do not necessarily represent the entire line **EMI** in detail.

**EMI** It reserves the right to make changes in materials, design and specifications without notice, in accordance with a policy of product improvement.