

Simplex filter FB 112 Mod.

General information



EMI filters basket simplex, they are often used to filter foreign material in pipelines and provide an inexpensive protection for pumps, meters, valves and similar mechanical equipment.

baskets

Typically constructed of heavy gauge, with perforations 1/8 "to 1/4", 3.1 mm to 6.3 mm, with stainless steel mesh, for filtering 20 to 600 mesh (see perforated metals and mesh p.5).

Building

These filters are designed for medium or coarse filtration. The angular cut designed baskets, enables direct flow through them, resulting in minimal pressure drop. For all sizes are manufactured with flanged cover as illustrated (if required fast closing clamp, please specify).

Cleaning

The removal of impurities is performed by extracting the basket. They can be supplied with a threaded connection on the top cover for installing venting or pressure gauge.

Dren connection

All specified sizes are supplied with drain connection and screw cap purge. If required with flange connection, please General information

Work pressure

150 lb (10.5 kg / cm^{two}) cold water, gas, oil, etc.

Capacity

The bodies are provided with baskets greater percentage of the filtration area relative to the area of the cross section corresponding to the diameter of the pipe. Most architects and engineers designers prefer that this ratio is at least 4 to 1, the greater number of baskets EMI have a radius of 6 to 1 or greater.

Tests

Hydrostatic testing individual twice the working pressure are performed.

Pressure drop

See graph.

Material Corps

Stainless Steel Stainless Steel

T-316 T-304 Steel Bronze Iron

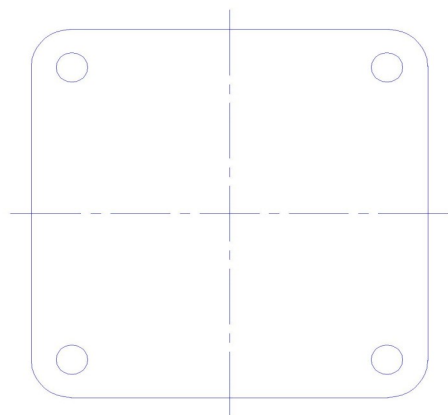
Gray A-126 Gr B

Applicable standards

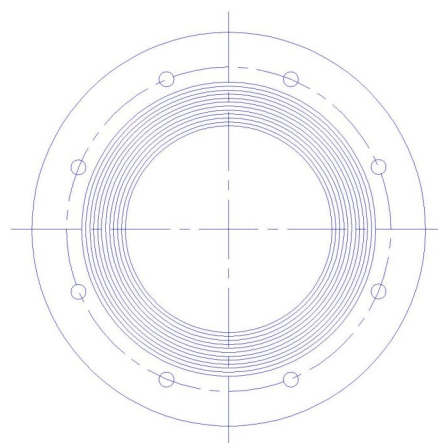
ANSI B2.1 to threaded ends to ANSI B16.5

flanged ends 150 lb

Simplex filter FB 112 Mod.



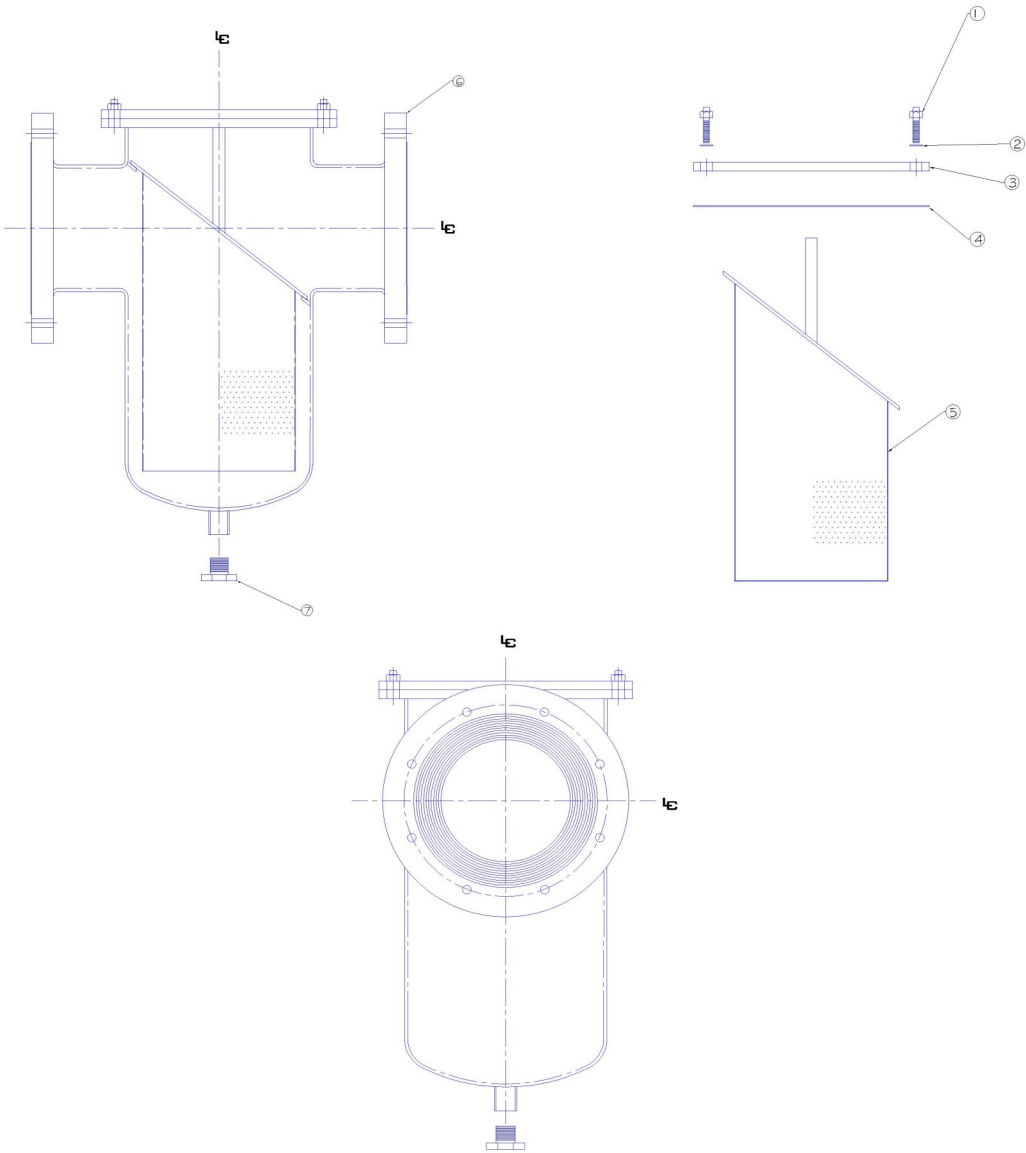
TAPA PARA FILTROS
 $\varnothing=2'' - \varnothing=4''$



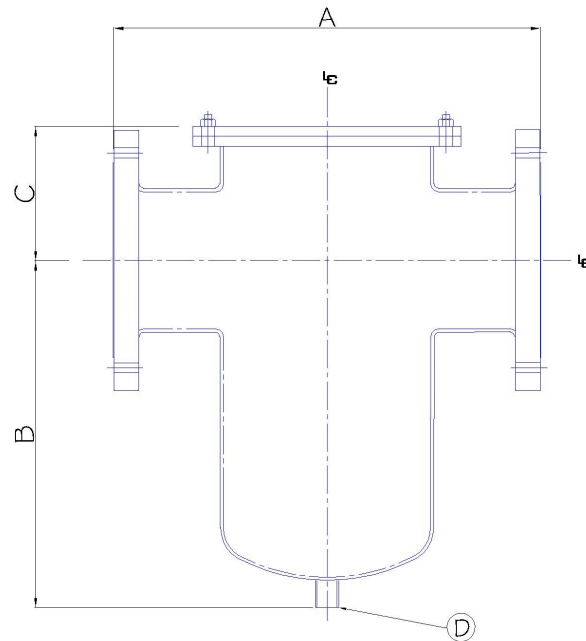
TAPA PARA FILTROS
 $\varnothing=6''$

Simplex filter FB 112 Mod.

Part No.		Piece
TH / FSB / 1	one	Hexagonal screws
RP / FSB / 2	two	Pressure washer
T / FSB / 3	3	Top
E / FSB / 4	4	Packing
C / FSB / 5	5	Basket
DF / FSB / 6	6	Body
TD / FSB / 7	7	Tapon of Dren



Simplex filter FB 112 Mod.

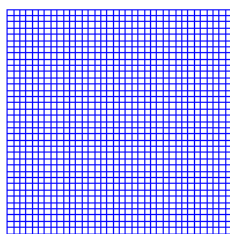


Overall Dimensions Inches							
Size	¾	one	1 1/2	two	3	4	6
TO	3 7/8	6 1/8	7	8 5/8	8 ¾	11 3/16	14
B	3	4 7/8	6 3/16	7	9 ¾	8 ¾	14½
C	2½	2 1/4	2 5/8	4¼	5	5½	6 ¼
D	3/8	3/8	3/8	½	¾	one	1¼
Weight Lb.	15/22	3.2	3.5	25	38	62	118

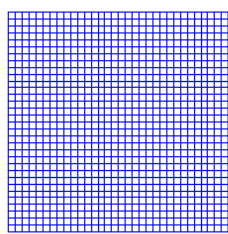
Overall dimensions in millimeters							
Size	¾	one	1 1/2	two	3	4	6
TO	98.4	155.6	177.8	219.1	222.2	284.2	355.6
B	76.2	123.8	157.2	177.8	247.6	284.2	368.3
C	63.5	57.2	66.7	107.9	127	139.7	158.7
D	9.5	9.5	9.5	12.7	19	25.4	31.7
Weight in kg	1.5	7	7.6	11.36	17.3	28.2	53.6

Simplex filter FB 112 Mod.

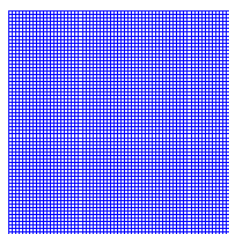
Basket



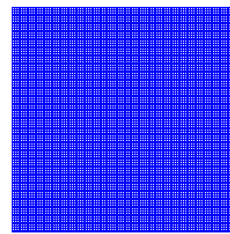
ABERTURA 1/32"
MALLA 20
(49% AREA ABIERTA)



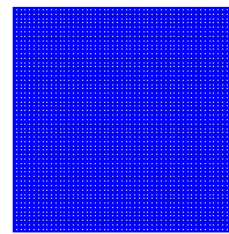
ABERTURA 1/50"
MALLA 30
(49% AREA ABIERTA)



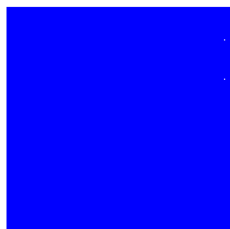
ABERTURA 1/64"
MALLA 40
(36% AREA ABIERTA)



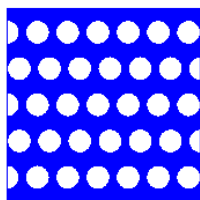
ABERTURA 0.009"
MALLA 60
(30.5% AREA ABIERTA)



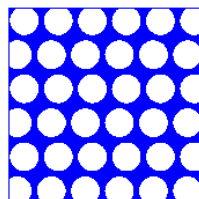
ABERTURA 0.007"
MALLA 80
(31.4% AREA ABIERTA)



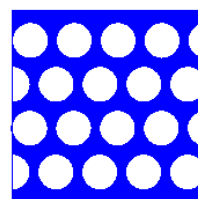
ABERTURA 0.005"
MALLA 100
(30.3% AREA ABIERTA)



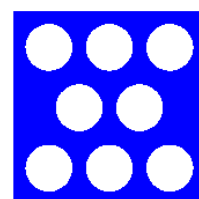
$\varnothing = 1/8"$
32 PERF./IN.
(40% AREA ABIERTA)



$\varnothing = 5/32"$
33 PERF./IN.
(52% AREA ABIERTA)



$\varnothing = 3/16"$
18 PERF./IN.
(50% AREA ABIERTA)



$\varnothing = 1/4"$
8 PERF./IN.
(40% AREA ABIERTA)



Simplex filter FB 112 Mod.



WARRANTY

We are pleased that we are a 100% Mexican company manufacturer of its own brand, **"EMI"** We manufacture and put at your disposal the following equipment:

- Quick connections or adaptations (For loading)
- Canasta filters (simplex and duplex)
- Filters "Y"
- Filters "T"
- Flow indicators (peepholes)
- Security equipment (Showers and Eyewash)
- Blade valves (Type Dump, Intern, and Puerto in "V")
- Pinch valves (fitting type, Spillway and Pneumatics)

EMI warrants its products against defects in workmanship, quality of materials or workmanship for 18 months from date of shipment from our warehouse or a year in operation.

This warranty is to repair the defective product in service conditions recommended by the manufacturer. The warranty is not valid when the article has been disassembled and / or repaired by unauthorized personnel.

In no event shall the manufacturer responsible for declining profits, losses plant unemployment, increased operating costs or other consequential damages item usage.

The illustrations in this catalog are representations of a model of each product line, but do not necessarily represent the entire line **EMI** in detail.

EMI It reserves the right to make changes in materials, design and specifications without notice, in accordance with a policy of product improvement.