

Venting valve blade type

MOD. 130 VCD 150 lbs



Brand valves EMI® blade type vent Mod. 130VCD, have been designed to work with fluids with high fiber, wherein the fluid contains solids such as sand, pulp, bagasse, etc., or if the flow is compound granules, salts, muds, etc.

By design, this valve is guaranteed to work with fluids at temperatures up to 265 ° C, pressure of 10.5 kg / cm² (150 psi).

Another advantage of using a valve blade EMI® mark type vent Mod. 130-VCD is easy to operate because they never have problems opening-closing, preventing it from sticking or leaking as conventional valves due to its perfect manufacture, packing and special seals, providing greater security for a tight seal.



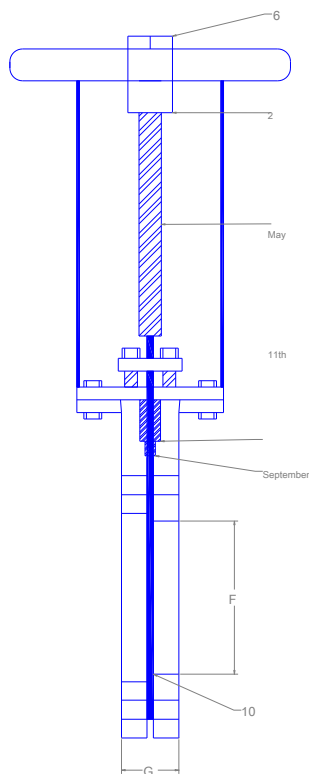
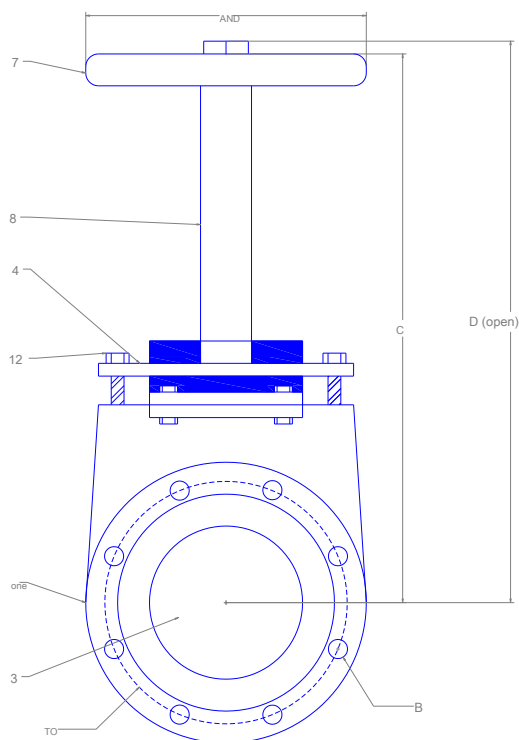
INDUSTRIAL MECHANICAL SPECIALTIES S.A. FROM C.V.

Venting valve blade type

MOD. 130 VCD 150 lbs



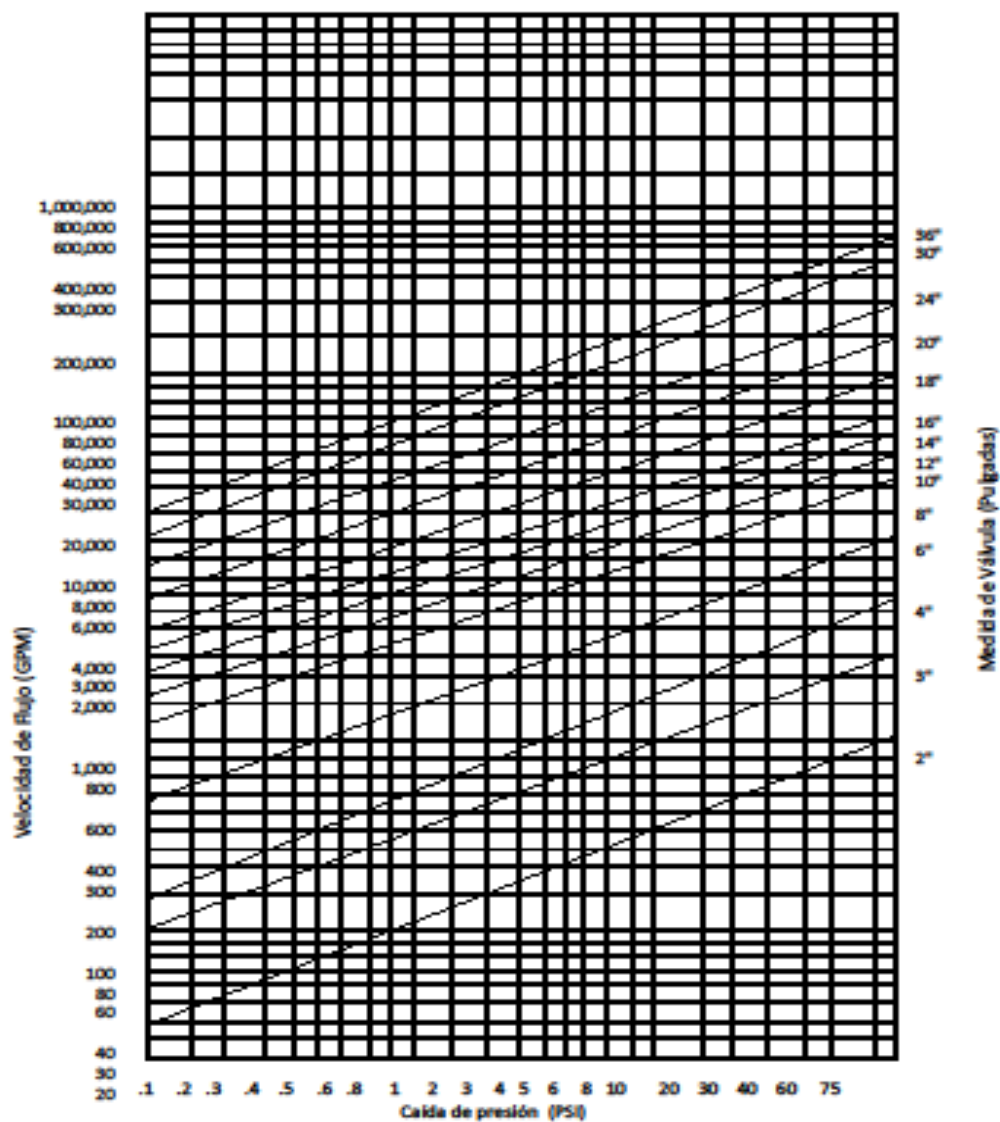
Val	3	4	5	6	8	10	12	14	16	18	twenty	24	26	28	30
TO	6	7 1/2 "	8 1/2 "	9 1/2 "	11 3/4 "	14 1/4 "	17 "	18 3/4 "	21 1/4 "	22 3/4 "	25 "	29 1/2 "	29 7/8 "	31 7/8 "	34 1/8 "
B	4 - 5/8 "	8 - 5/8 "	8 - 3/4 "	8 - 3/4 "	8 - 3/4 "	12 - 7/8 "	12 - 7/8 "	12-1	16-1	16-1 1/8 "	1/20 1/4 "	24 1/4 "	1 1/4 1/28 1/4 "	Jan. 28 1/4 "	
C	16 "	18 "	19 3/4 "	21 1/2 "	27 "	33 "	38 "	43 "	46 "	51 "	63 1/2 "	73 "	76 1/2 "	81 1/2 "	86 1/2 "
D	19 1/2 "	25 "	28 1/2 "	31 "	38 "	46 "	53 "	60 "	66 "	77 "	87 1/2 "	101 "	105 1/2 "	112 1/4 "	119 3/8 "
AND	8 "	8 "	eleven"	eleven"	eleven"	16 "	16 "	16 "	twenty"	twenty"	twenty"	30 "	30 "	30 "	40 "
F	3"	4"	5"	6 "	8 "	10 "	12 "	14 "	16 "	18 "	twenty"	24 "	26 "	28 "	30 "
G	two"	two"	2 1/4 "	2 1/4 "	2 3/4 "	2 3/4 "	3"	3"	3 1/2 "	3 1/2 "	4 1/2 "	4 1/2 "	4 1/2 "	4 1/2 "	4 5/8 "



Part No.	one	Piece
C-VC 3-30 / 1	two	Body
H-VC 3-30 / 2	3	Husillo
CH-VC 3-30 / 3	4	Glands
PE-VC 3-30 / 5	5	Lift nut
CT-VC 3-30 / 6	6	Locknut
V-VC 3-30 / 7	7	Steering wheel
Y-VC 3-30 / 8	8	Yoke
E-VC 3-30 / 9	9	Packing
O-VC 3-30 / 10	10	O-Ring
CE-VC 3.3 / 11	eleven	Eyebrow w / cleaning
TPE-VC 3-30 / 12	12	Screws w / press

Venting valve blade type

Downwash - Valve Open



Venting valve blade type

WARRANTY



We are pleased that we are a 100% Mexican company manufacturer of its own brand, **"EMI"** We manufacture and put at your disposal the following equipment:

- Quick connections or adaptations (For loading)
- Canasta filters (simplex and duplex)
- Filters "Y"
- Filters "T"
- Flow indicators (peepholes)
- Security equipment (Showers and Eyewash)
- Blade valves (Type Dump, Intern, and Puerto in "V")
- Pinch valves (fitting type, Spillway and Pneumatics)
- Macho valve (Self-lubricated and lubricated)

EMI warrants its products against defects in workmanship, quality of materials or workmanship for 18 months from date of shipment from our warehouse or a year in operation.

This warranty is to repair the defective product in service conditions recommended by the manufacturer. The warranty is not valid when the article has been disassembled and / or repaired by unauthorized personnel.

In no event shall the manufacturer responsible for declining profits, losses plant unemployment, increased operating costs or other consequential damages item usage.

The illustrations in this catalog are representations of a model of each product line, but do not necessarily represent the entire line **EMI** in detail.

EMI It reserves the right to make changes in materials, design and specifications without notice, in accordance with a policy of product improvement.